



SW Engineering Course 2015-2016

Oracle 11g Database Installation


Prepared by: Shaimaa Haridy
shimaafcis@yahoo.com

ter ▶ Work (E:) ▶ Programs ▶ Oracle 11g ▶ Java sdk

File Edit View Action Help
n Burn New folder

Name	Date modified	Type	Size
 jdk-8u60-windows-x64	10/2/2015 2:45 AM	Application	190,626 KB
 jdk-8u60-windows-i586	10/2/2015 2:53 AM	Application	185,160 KB

Java SE Development Kit 8 Update 60

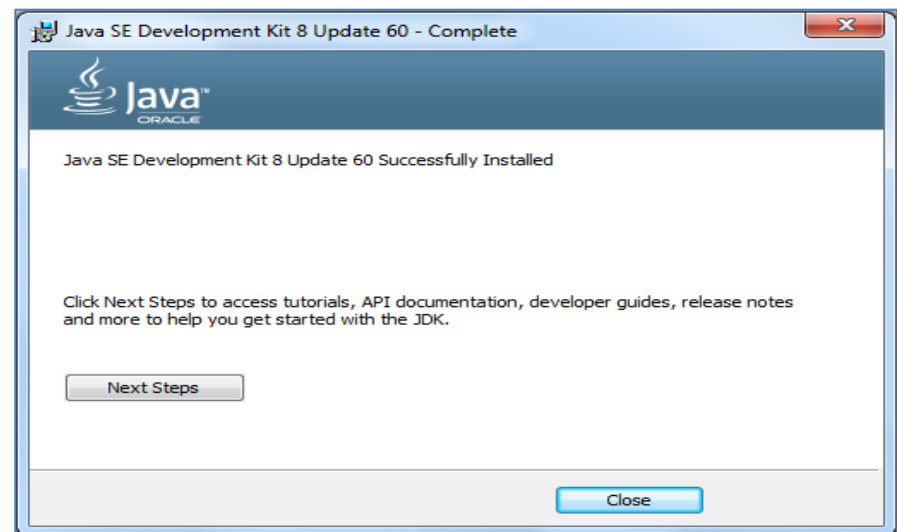
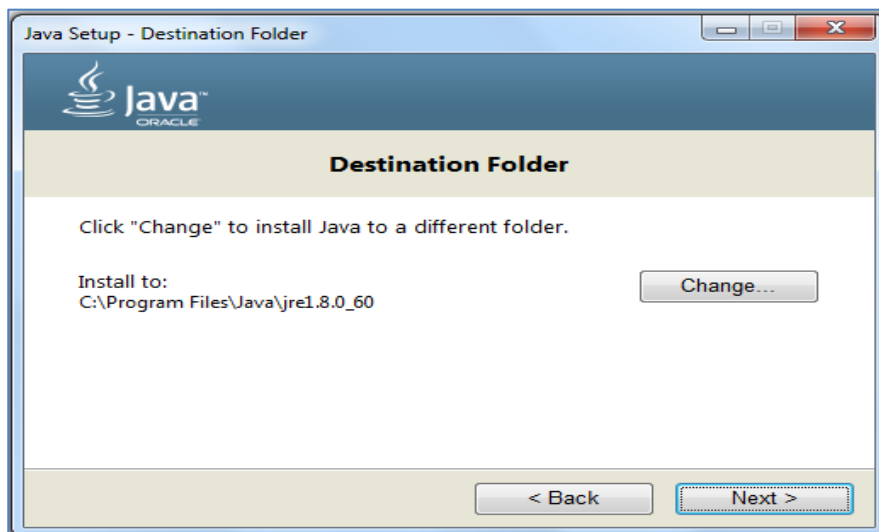
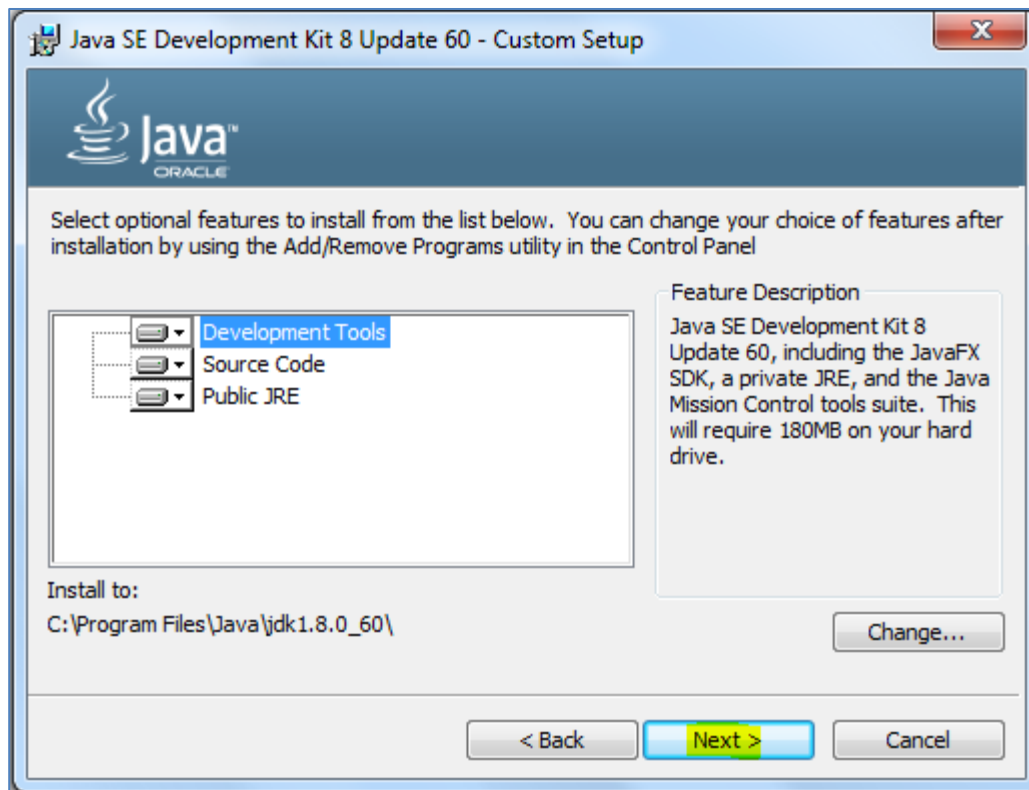


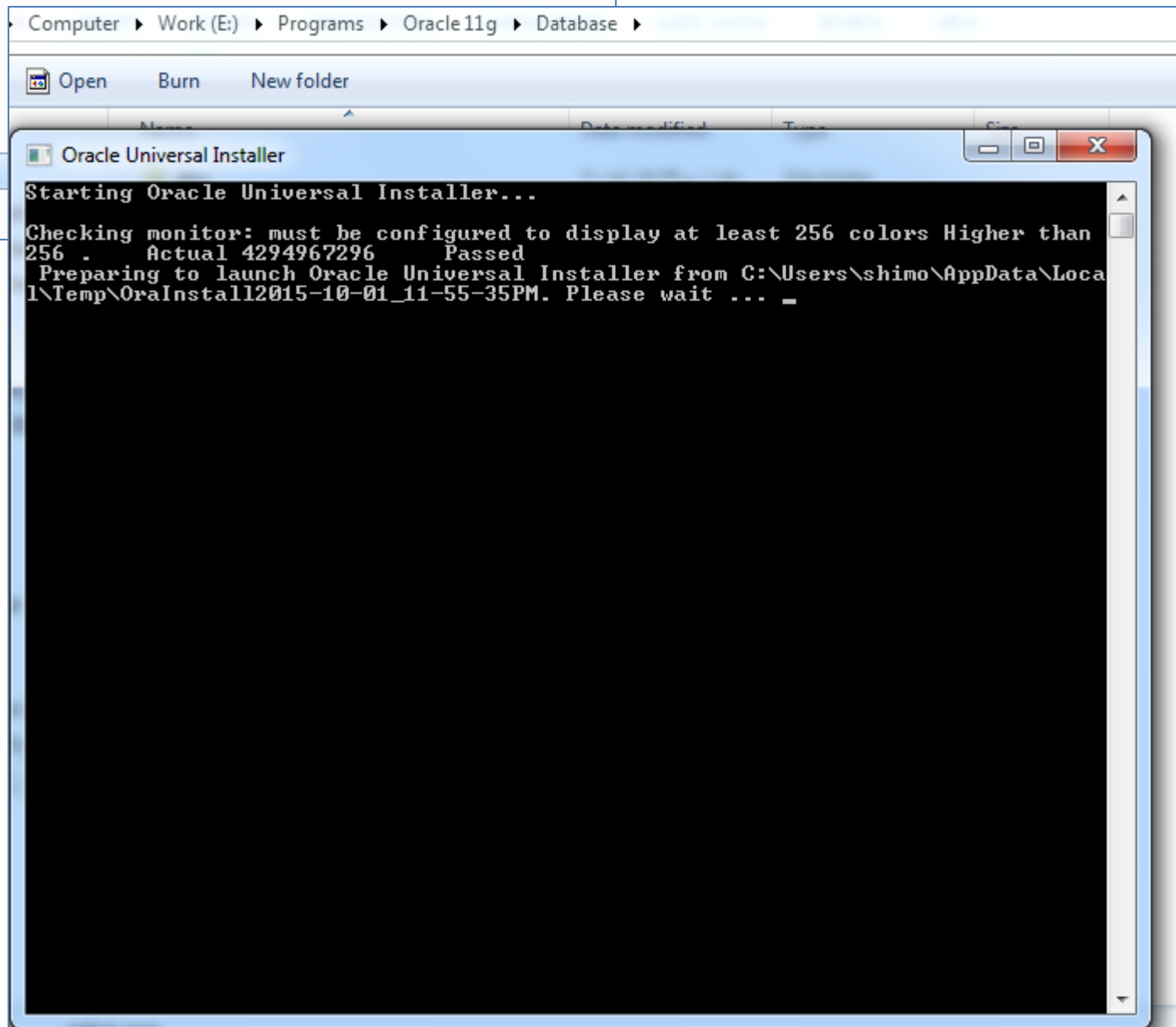
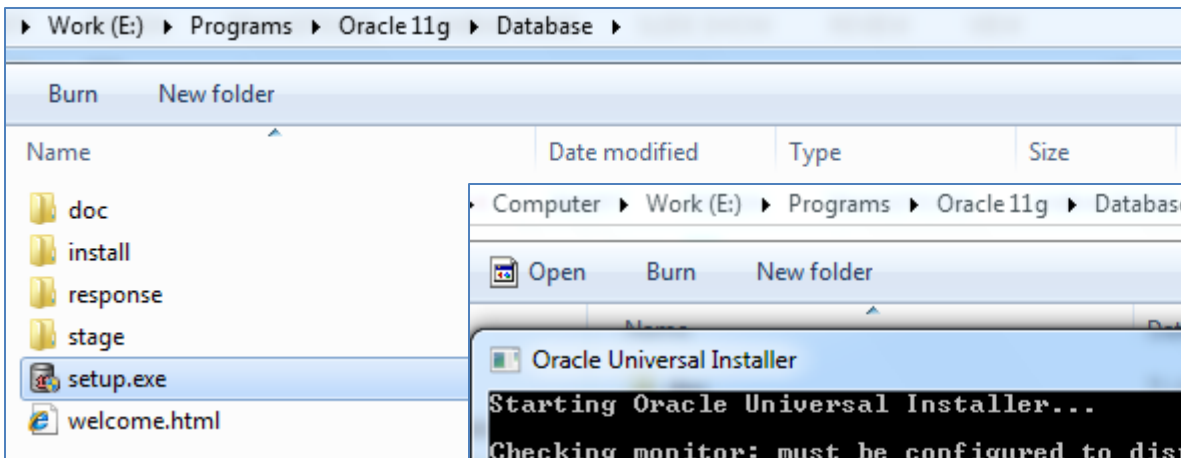
Welcome to the Installation Wizard for Java SE Development Kit 8 Update 60

Java SE Development Kit 8 Update 60 Setup is preparing the Installation Wizard which will guide you through the program setup process. Please wait.

Computing space requirements

< Back Next > Cancel







Configure Security Updates



Configure Security Updates

Installation Option

- Grid Installation Options
- Install Type
- Typical Installation
- Prerequisite Checks
- Summary
- Install Product
- Finish

Provide your email address to be informed of security issues, install the product and initiate configuration manager. [View details.](#)

Email:

Easier for you if you use your My Oracle Support email address/username.

I wish to receive security updates via My Oracle Support.

My Oracle Support Password:

Help

< Back

Next >

Finish

Cancel

Configure Security Updates



Configure Security Updates

Installation Option

Grid Installation Options

Install Type

Typical Installation

Prerequisite Checks

Summary

Install Product

Finish

Provide your email address to be informed of security issues, install the product and initiate configuration manager. [View details.](#)

Email:

Easier for you if you use your My Oracle Support email address/username.

I wish to receive security updates via My Oracle Support.

My Oracle Support Password:

Email Address Not Specified



You have not provided an email address.

Do you wish to remain uninformed of critical security issues in your configuration?

Yes

No

Help

< Back

Next >

Finish

Cancel

Select Installation Option

- [Configure Security Updates](#)
- Installation Option**
- [Grid Installation Options](#)
- Install Type
- Typical Installation
- Prerequisite Checks
- Summary
- Install Product
- Finish

Select any of the following install options.

- Create and configure a database
- Install database software only
- Upgrade an existing database

Help

< Back **Next >** Finish Cancel

System Class

- Configure Security Updates
- [Installation Option](#)
- System Class**
- [Typical Installation](#)
- Prerequisite Checks
- Summary
- Install Product
- Finish

Desktop Class

Choose this option if you are installing on a laptop or desktop class system. This option includes a starter database and allows minimal configuration.

Server Class

Choose this option if you are installing on a server class system, such as what you would use when deploying Oracle in a production data center. This option allows for more advanced configuration options.

Help

< Back

Next >

Finish

Cancel

Typical Install Configuration

- Configure Security Updates
- Installation Option
- System Class
- Typical Installation**
- Prerequisite Checks
- Summary
- Install Product
- Finish

Perform full Database installation with basic configuration.

Oracle base:

Software location:

Database file location:

Database edition:

Character Set:

Global database name:

Administrative password: **Administrator1**

Confirm Password:

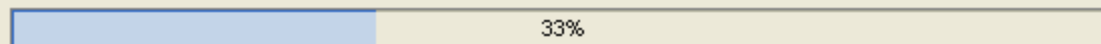


Perform Prerequisite Checks

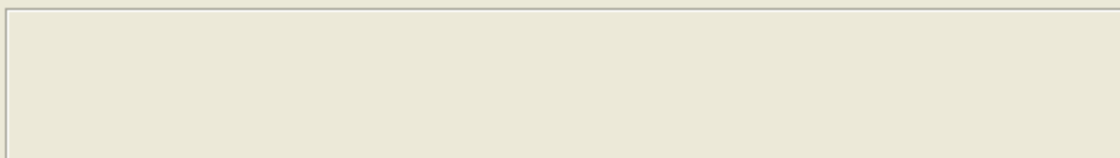


- Configure Security Updates
- Installation Option
- System Class
- Typical Installation
- Prerequisite Checks**
- Summary
- Install Product
- Finish

Verifying that the target environment meets minimum installation and configuration requirements for products you have selected. This can take time. Please wait.



Checking Swap Size ...



Help

< Back

Next >

Finish

Cancel

Summary

- Configure Security Updates
- Installation Option
- System Class
- Typical Installation
- [Prerequisite Checks](#)
- Summary**
- Install Product
- Finish

Oracle Database 11g Release 2 Installer

- Global settings**
 - Disk space: required 3.27 GB available 131.56 GB
 - Source location: E:\Programs\Oracle 11g\Database\install\..stage\products.xml
 - Install method: Typical installation
 - Database edition: Enterprise Edition (Create and configure a database)
 - Oracle base: E:\app\Shaimaa
 - Software location: E:\app\Shaimaa\product\11.2.0\dbhome_1
- Inventory information**
 - Inventory location: C:\Program Files\Oracle\Inventory
- Database information**
 - Configuration: General Purpose / Transaction Processing
 - Global database name: orcl
 - Oracle system identifier (SID): orcl
 - Allocated memory: 1229 MB
 - Automatic memory management option: TRUE
 - Database character set: Western European (WE8MSWIN1252)

Save Response File...

Help

< Back

Next >

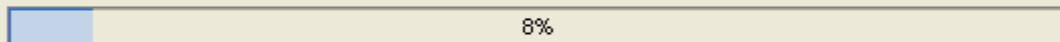
Finish

Cancel

Install Product

- Configure Security Updates
- Installation Option
- System Class
- Typical Installation
- Prerequisite Checks
- Summary
- Install Product**
- Finish

Progress



Loading products list. Please wait.

Status

➔	Oracle Database installation	In Progress
✓	• Prepare	Succeeded
	• Copy files	Pending
	• Setup files	Pending
	Oracle Database configuration	Pending

[Details](#) [Retry](#) [Skip](#)

ORACLE DATABASE 11g

**Consolidate
Compress
Control**

[Help](#)

[< Back](#) [Next >](#) [Finish](#) [Cancel](#)

Install Product

- Configure Security
- Installation Option
- System Class
- Typical Installation
- Prerequisite Check
- Summary
- Install Product**
- Finish

Windows Security Alert

Windows Firewall has blocked some features of this program

Windows Firewall has blocked some features of Java(TM) 2 Platform Standard Edition binary on all public and private networks.

Name: Java(TM) 2 Platform Standard Edition binary
Publisher: Sun Microsystems, Inc.
Path: C:\users\shaimaa\appdata\local\temp\orainstall2015-10-02_12-14-05am\jdk\jre\bin\javaw.exe

Allow Java(TM) 2 Platform Standard Edition binary to communicate on these networks:

- Private networks, such as my home or work network
- Public networks, such as those in airports and coffee shops (not recommended because these networks often have little or no security)

[What are the risks of allowing a program through a firewall?](#)

Allow access Cancel

In Progress
Succeeded
In Progress
Pending
Pending

Retry Skip

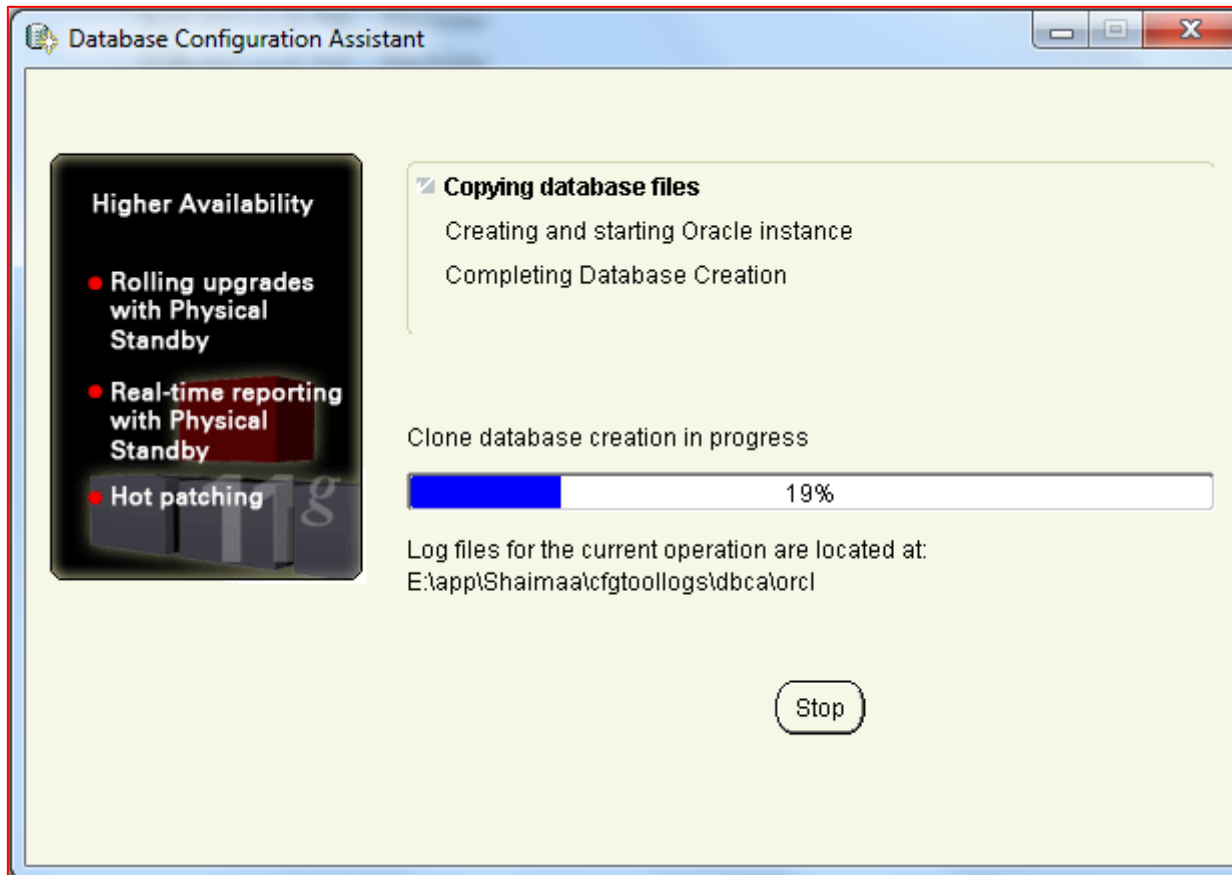
ORACLE
DATABASE 11g
Application
Development

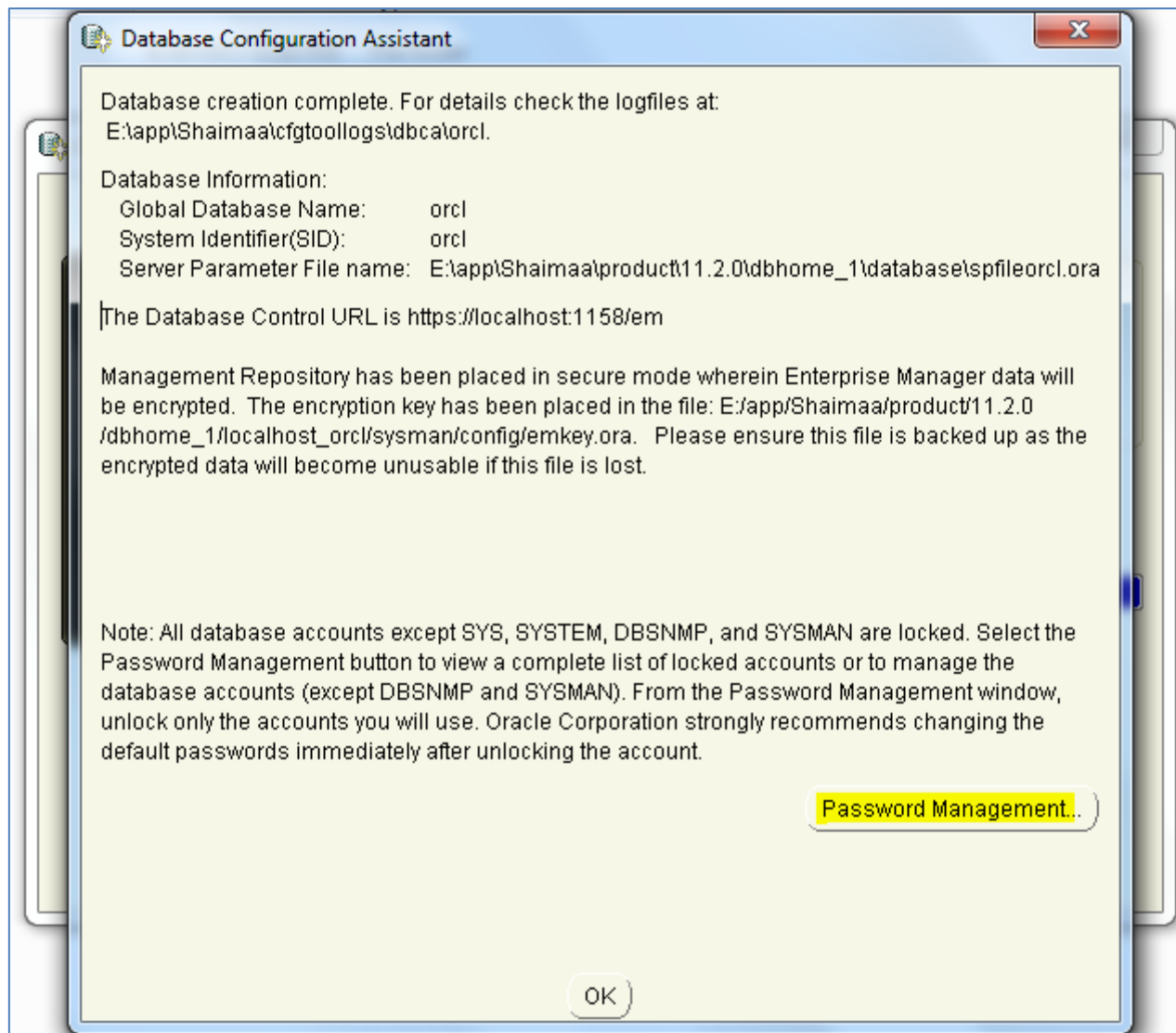


Oracle Application Express
Oracle SQL Developer
Oracle Data Masking Pack

Help

< Back Next > Finish **Cancel**





Password Management

Lock / unlock database user accounts and / or change the default passwords:

User Name	Lock Account?	New Password	Confirm Password
OLAPSYS	✓		
SI_INFORMTN_SCHEMA	✓		
OWBSYS	✓		
ORDPLUGINS	✓		
SPATIAL_WFS_ADMIN_...	✓		
SPATIAL_CSW_ADMIN_...	✓		
XDB	✓		
HR		**	**
APEX_PUBLIC_USER	✓		
OE	✓		
DIP	✓		

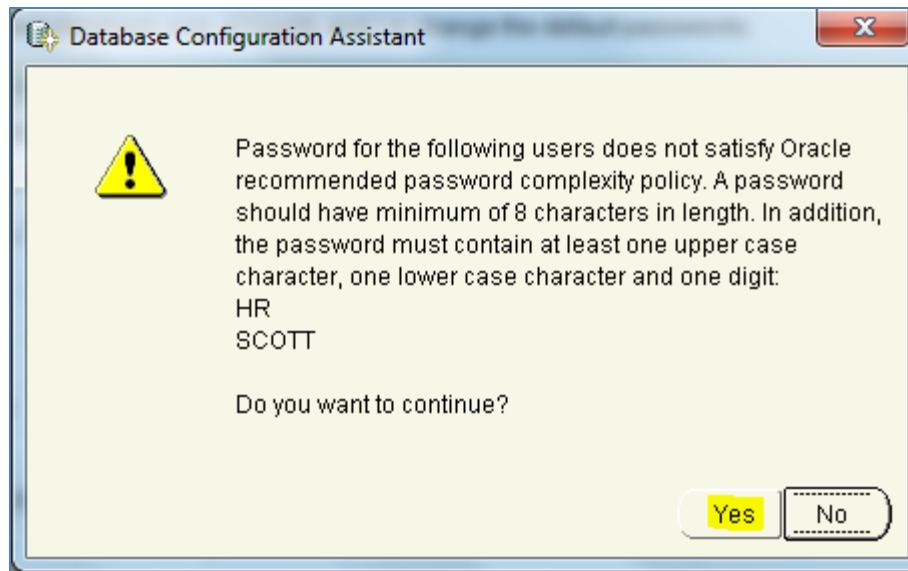
OK Cancel

Password Management

Lock / unlock database user accounts and / or change the default passwords:

User Name	Lock Account?	New Password	Confirm Password
PM	✓		
BI	✓		
OWBSYS_AUDIT	✓		
APEX_030200	✓		
APPQOSSYS	✓		
ORACLE_OCM	✓		
WMSYS	✓		
SCOTT		*****	*****
EXFSYS	✓		
ORDSYS	✓		
MDSYS	✓		

OK Cancel Help





Finish



- Configure Security Updates
- Installation Option
- System Class
- Typical Installation
- Prerequisite Checks
- Summary
- Install Product
- Finish**

The installation of Oracle Database was successful.

Note:

Enterprise Manager Database Control URL - (orcl) :
`https://Mocalhost:1158/em`

Your database configuration files have been installed in E:\app\Shaimaa while other components selected for insta



Help

< Back

Next >

Finish

Close

Accessories
 Games
 Google Chrome
 K-Lite Codec Pack
 Maintenance
 Microsoft Office
 Microsoft Office 2013
 Oracle - OraDb11g_home1
 Database Control - orcl
 Application Development
 Oracle Objects for OLE C++ Clas
 Oracle Objects for OLE Readme
 Oracle ODBC Help
 Oracle Provider for OLE DB Read
SQL Developer
 SQL Plus
 Configuration and Migration Tools
 Integrated Management Tools
 Oracle Installation Products
 Warehouse Builder

C:\Program Files (x86)\Java\jdk1.8.0_60\bin

Name	Date modified	Type	Size
appletviewer	10/2/2015 2:58 AM	Application	16 KB
extcheck	10/2/2015 2:58 AM	Application	16 KB
idlj	10/2/2015 2:58 AM	Application	16 KB
jabswitch	10/2/2015 2:58 AM	Application	30 KB
jar	10/2/2015 2:58 AM	Application	16 KB
jarsigner	10/2/2015 2:58 AM	Application	16 KB
java	10/2/2015 2:58 AM	Application	188 KB
javac			16 KB
javadoc			16 KB
javafxpackager			113 KB
javah			16 KB
javap			16 KB
javapackager			113 KB
java-rmi			16 KB
javaw	10/2/2015 2:58 AM	Application	188 KB
javaws	10/2/2015 2:58 AM	Application	268 KB
jcmm	10/2/2015 2:58 AM	Application	16 KB
jconsole	10/2/2015 2:58 AM	Application	17 KB
jdb	10/2/2015 2:58 AM	Application	16 KB
jdeps	10/2/2015 2:58 AM	Application	16 KB

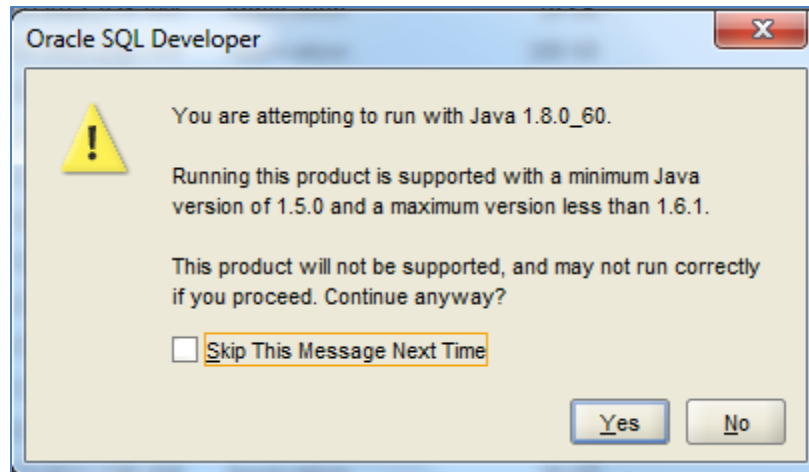
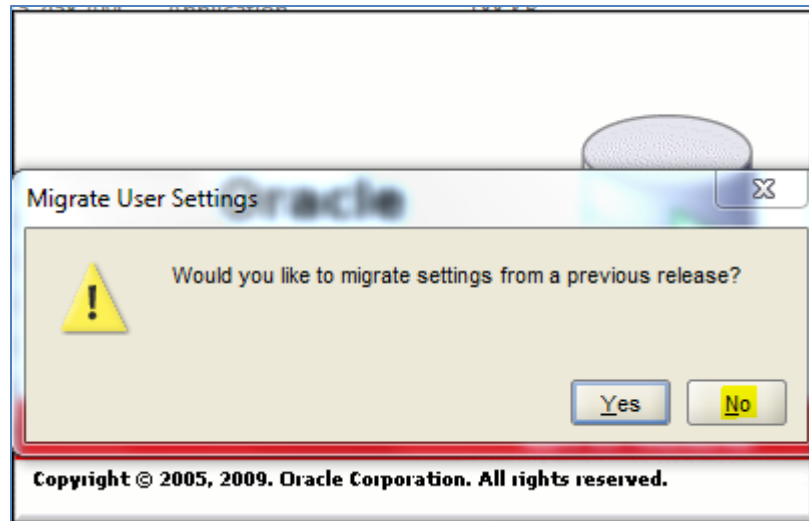
Oracle SQL Developer

Enter the full pathname for java.exe:

C:\Program Files (x86)\Java\jdk1.8.0_60\bin\java.exe

OK Cancel

C:\Program Files (x86)\Java\jdk1.8.0_60\bin





Connections

Connections

SQL History

Configure File Type Associations

Select File Types to Associate with SQL Developer

- SQL Source (.sql)
- PL/SQL Source (.pls)
- PL/SQL Source (.pks)
- PL/SQL Body Source (.plb)
- PL/SQL Body Source (.pkb)

Help OK Cancel

Snippets

Extended Search



New / Select Database Connection

Connection Name	Connection Details
ORCLconnHR	

Connection Name: ORCLconnHR

Username: hr

Password: ..

Save Password

Oracle

Role: default

Connection Type: Basic

OS Authentication

Kerberos Authentication

Proxy Connection

Hostname: localhost

Port: 1521

SID: ord

Service name

Status : Success

Help Save Clear Test Connect Cancel



Connections toolbar with a red box around the Run button (a green play icon) and a status indicator showing 0.04565635 seconds.

Connections tree view showing a single connection named ORCLconnHR.

```
select * from employees
```

Results toolbar with buttons for Results, Script Output, Explain, Autotrace, DBMS Output, and OWA Output.

Results:

	EMPLOYEE_ID	FIRST_NAME	LAST_NAME	EMAIL	PHONE_NUMBER	HIRE_DATE	JOB_ID	SALARY
1	198	Donald	OConnell	DOCONNEL	650.507.9833	21-JUN-07	SH_CLERK	2600
2	199	Douglas	Grant	DGRANT	650.507.9844	13-JAN-08	SH_CLERK	2600
3	200	Jennifer	Whalen	JWHALEN	515.123.4444	17-SEP-03	AD_ASST	4400
4	201	Michael	Hartstein	MHARTSTE	515.123.5555	17-FEB-04	MK_MAN	13000
5	202	Pat	Fay	PFAY	603.123.6666	17-AUG-05	MK_REP	6000
6	203	Susan	Mavris	SMAVRIS	515.123.7777	07-JUN-02	HR_REP	6500
7	204	Hermann	Baer	HBAER	515.123.8888	07-JUN-02	PR_REP	10000
8	205	Shelley	Higgins	SHIGGINS	515.123.8080	07-JUN-02	AC_MGR	12008
9	206	William	Gietz	WGIETZ	515.123.8181	07-JUN-02	AC_ACCOUNT	8300
10	100	Steven	King	SKING	515.123.4567	17-JUN-03	AD_PRES	24000
11	101	Neena	Kochhar	NKOCHHAR	515.123.4568	21-SEP-05	AD_VP	17000

Thank You