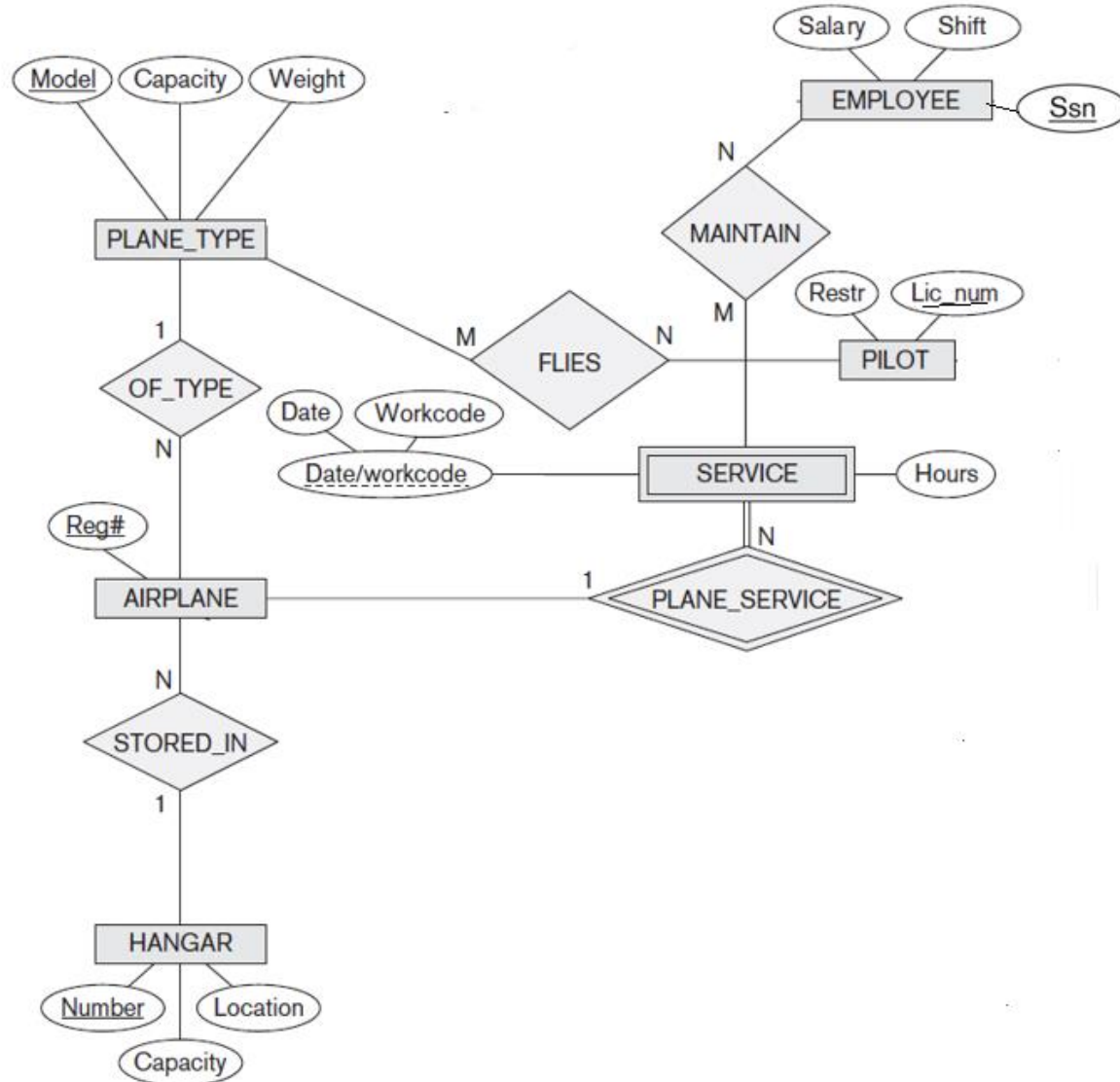


- **Question 1: (4.5 Marks)**
- Describe the categories of data models.
- Conceptual (high-level, semantic) data models:
 - Provide concepts that are close to the way many users perceive data.
 - (Also called *entity-based* or *object-based* data models.)
- Physical (low-level, internal) data models:
 - Provide concepts that describe details of how data is stored in the computer. These are usually specified in an ad-hoc manner through DBMS design and administration manuals
- Implementation (representational) data models:
 - Provide concepts that fall between the above two, used by many commercial DBMS implementations (e.g. relational data models used in many commercial systems).

Question 2: (10.5 Marks)

Map the following ER diagram for small private airport to relational schema.



Employee

<u>SSN</u>	Salary	Shift
------------	--------	-------

Pilot

<u>Lics_num</u>	Restr
-----------------	-------

Flies

<u>Lics_num</u>	<u>Model</u>
-----------------	--------------

Plane_Type

<u>Model</u>	Capacity	Weight
--------------	----------	--------

Airplane

<u>Reg#</u>	Hangar_Number	Model
-------------	---------------	-------

Hangar

<u>Number</u>	Capacity	Location
---------------	----------	----------

Maintain

<u>Reg#</u>	<u>Date</u>	<u>WorkCode</u>	<u>SSN</u>
-------------	-------------	-----------------	------------

Service

<u>Reg#</u>	<u>Date</u>	<u>WorkCode</u>	Hours
-------------	-------------	-----------------	-------